

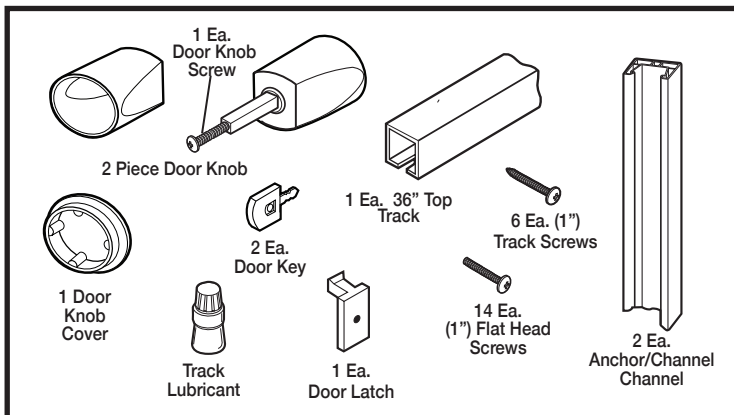
# Capri/Devonshire Installation Instructions

For quick and easy installation of your folding door, read these instructions thoroughly.

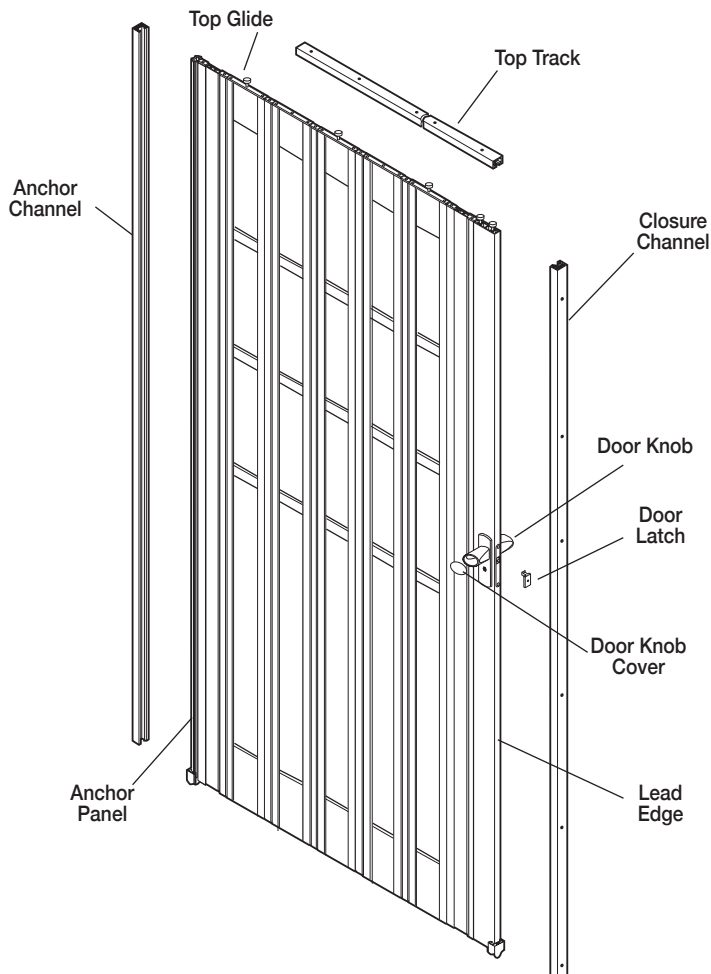
## The Tools You Will Need

- Drill • Phillips screwdriver bit • 3/32" drill bit for pilot holes
- small Phillips head screwdriver • tape measure • pencil
- fine tooth hacksaw (for cutting the top track)
- safety glasses • fine sandpaper (can be used to smooth edges after trimming top track) • level

**Make sure all of the following Parts are included before you begin:**



## Door Parts Location

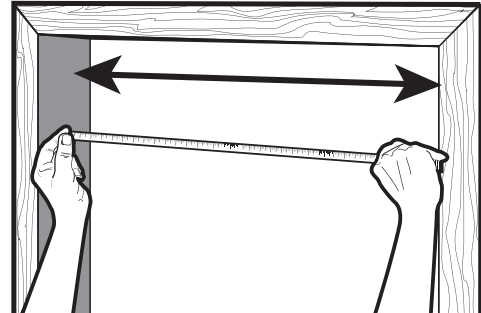


## SINGLE DOOR INSTALLATION

### 1. Measure the Door Opening

Measure the width and height of your finished opening. This door fits openings that are 24" to 36" wide and 80" high.

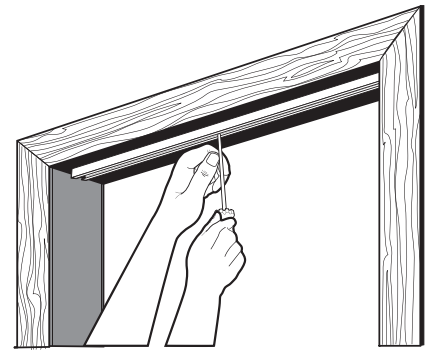
**The door height cannot be trimmed or altered.**



### 2. Install the Top Track

The top track should measure 1/8" shorter than the finished opening width. This allows for the pivoting of the track during installation.

Measure and mark the top track to the proper length for the opening. Cut the top track with a fine tooth hacksaw. Fine sandpaper can be used to smooth any rough edges after cutting. Trimming the top track may not be necessary.

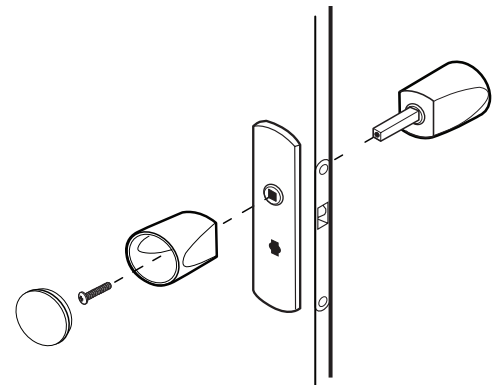


Position the top track so it is straight and centered in the door jamb.

Make a pilot hole through the screw hole nearest the center of the track. After making the pilot hole, insert a track screw here to hold the track in place. Do not tighten fully.

### 3. Attach the Door Knob

Take the male handle and remove the screw from the handle pin. Insert the male handle pin through the pre-drilled handle hole on the lead edge. Place the female handle onto the male handle pin. Re-insert the screw into the handle pin and tighten with a screwdriver until secure. Snap the cover onto the female handle.

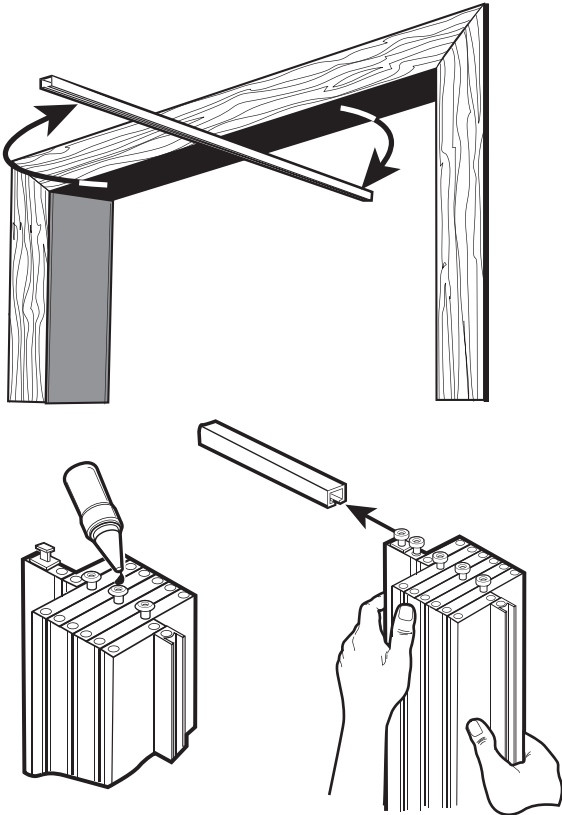


# Capri Installation Instructions

## 4. Hang Door onto Track

Apply lubricant to each top glide. It is not required but you can also lubricate the top track.

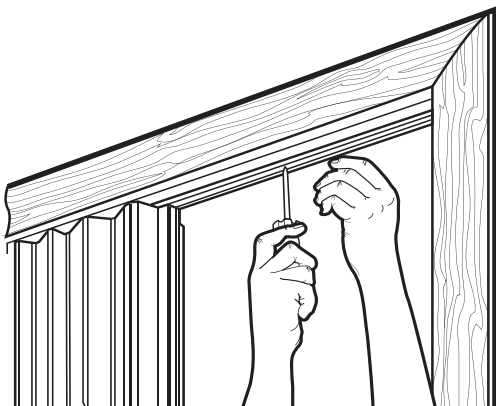
Decide if the door will open from the left or the right. When sliding the door onto the top track, make sure the panel with the door handles is facing towards the opening side. Pivot one end of the top track outward. Slide all of the top glides onto the top track. Stack the panels together near the center screw and pivot the top track back into place.



## 5. Secure the Top Track

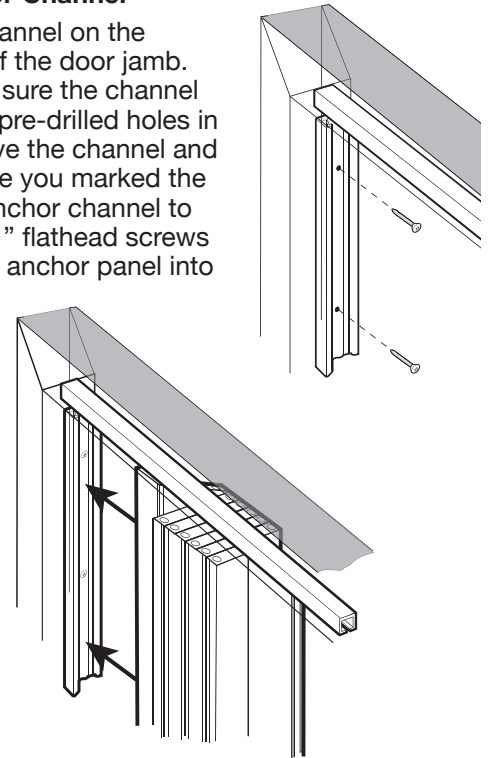
Make sure the track is straight. Drill the remaining pilot holes in the top track.

Secure the top track with the remaining track screws. Make sure all screws are as straight and tight as possible to ensure smooth operation of the door. Be sure to fully tighten the first screw you installed in the track.



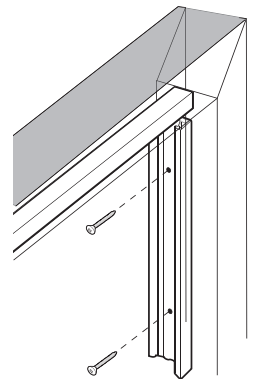
## 6. Install the Anchor Channel

Place the anchor channel on the **non-opening side** of the door jamb. Use a level to make sure the channel is plumb. Mark the pre-drilled holes in the channel. Remove the channel and drill pilot holes where you marked the jamb. Secure the anchor channel to the jamb using the 1" flathead screws provided. Press the anchor panel into the channel.



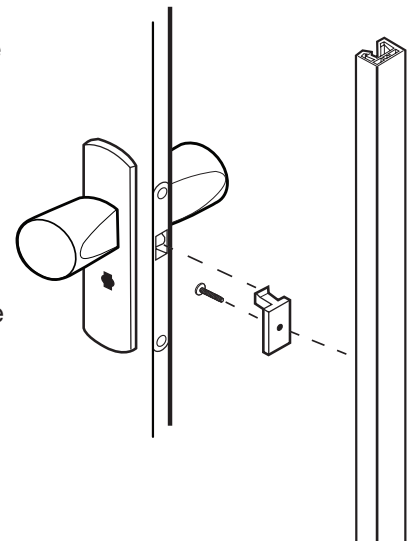
## 7. Install the Closure Channel

Place the closure channel on the **opening side** of the door jamb. Use a level to make sure the channel is plumb. Mark the pre-drilled holes in the channel. Remove the channel and drill pilot holes where you marked the jamb. Secure the closure channel to the jamb using the 1" flathead screws provided.



## 8. Attach Door Latch

Close the door until almost fully closed and mark the location on the closure channel where the latch hole on the lead edge would hit the channel. Place the top edge of the door latch piece at this location on the closure channel and secure the latch with a 1" flathead screw. Once the door is in the closed position and the door is latched, the key can be used to lock the door.



# Capri Installation Instructions

## DOUBLE DOOR INSTALLATION

### 1. Measure the Door Opening

Divide the width of the opening by two. Cut each top track to this measurement so that when installed, the tracks butt against one another in the center of the door opening.

### 2. Install the Top Track

On a center line drawn across the top of the door opening, install either track and install all screws in this track. You will install the remaining track later.

### 3. Attach the Door Knob

Take the male handle and remove the screw from the handle pin. Insert the male handle pin through the pre-drilled handle hole on the lead edge. Place the female handle onto the male handle pin. Re-insert the screw into the handle pin and tighten with a screwdriver until secure. Snap the cover onto the female handle. Repeat with the other handle.

### 4. Hang the Doors onto the Track

Lubricate the top glides with the lubricant supplied. Slide both doors onto the installed track with the lead edges facing each other.

### 5. Install Remaining Top Track

Install the second track. Slide one of the doors onto this track. Set a track screw at the track center joint and leave the screw projecting down  $\frac{1}{2}$ " to prevent the glides from passing the joint.

### 6. Install the Anchor Channels

Place the anchor channel on one side of the door jamb. Use a level to make sure the channel is plumb. Mark the pre-drilled holes in the channel. Remove the channel and drill pilot holes where you marked the jamb. Secure the anchor channel to the jamb using the 1" flathead screws provided. Press the anchor panel into the channel. Repeat these steps on the other side of the door jamb.

### 7. Install the Closure Channel

Align the closure channel on the lead edge of one of the doors so that it is flush with the top and bottom of the door. Mark the pre-drilled holes in the Closure channel. Set the closure channel aside and drill pilot holes where you marked the lead edge. Secure the closure channel to the lead edge with the 1" flathead screws.

### 8. Attach the Door Latch

Close the door until almost fully closed and mark the location on the closure channel where the latch hole on the lead edge would hit the channel. Place the top edge of the door latch piece at this location on the closure channel and secure the latch with a 1" flathead screw. Once the door is in the closed position and the door is latched, the key can be used to lock the door.

